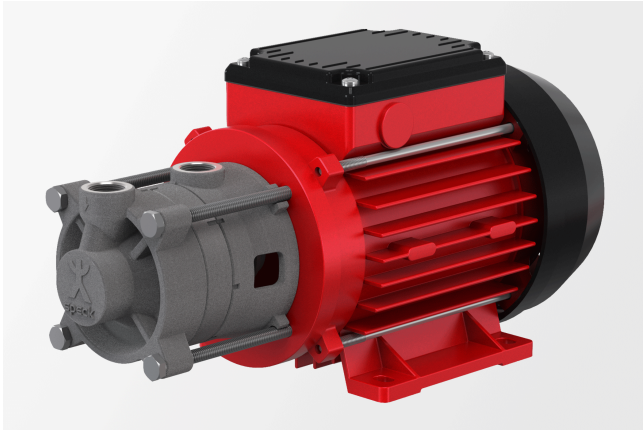


# Product data sheet

**Regenerative turbine pump**

Close-coupled pump with mechanical seal



## Description

- » Regenerative turbine pump
- » Close-coupled pump
- » Mechanical seal
- » Two-stage
- » Suitable for the delivery of gas shares
- » High pressures with a compact design
- » Steep characteristic curve

## Markets and applications

**Industrial cooling**

- » Chillers/cooling machines
- » Cooling appliances

**Food and beverage industry**

- » Beverage filling plants
- » Reverse osmosis systems

**Temperature control**

- » Laboratory tempering devices
- » Hot-water tempering devices
- » Oil tempering devices

## Get in touch with us!

Speck Pumpen Walter Speck GmbH & Co. KG  
Regensburger Ring 6-8  
91154 Roth  
Deutschland

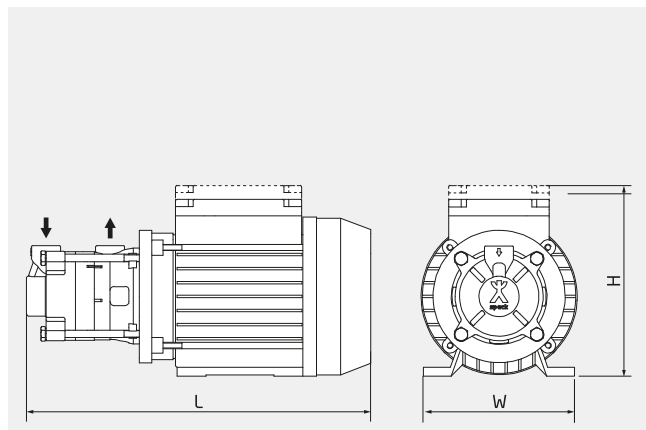
**Make a non-binding enquiry**

+49 9171 809 0

info@speck.de

## Technical data

International system of units, alternating current 50 Hz

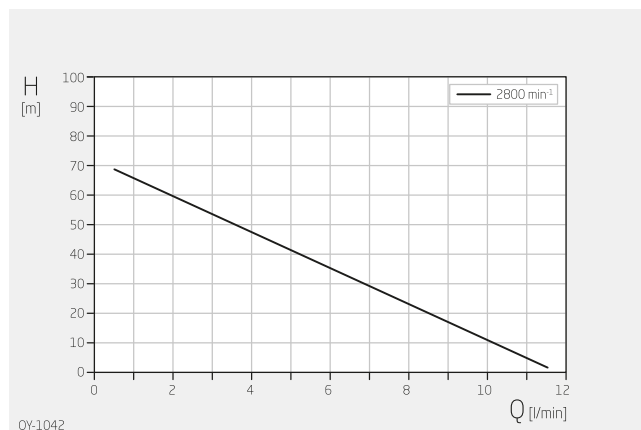


H 140-151 mm

W 120 mm

L 274 mm

Dimensions may vary depending on the design.

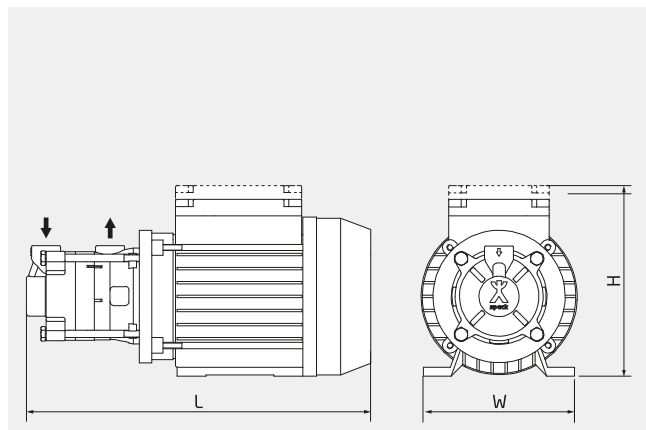


Specifications apply for water at 20°C and nominal speed.

Product type	Regenerative turbine pump
Shaft sealing	Mechanical seal
Pump design	Close-coupled pump
Typical media	Water max. +140 °C Oil max. +160 °C
Self-priming	No
Variable speed	Frequency-converter-compatible motor on request
Total head	2-70 m
Flow rate	1-12 l/min
Nominal pressure	PN 10
Motor current type	1~ 3~
Type of motor	Asynchronous motor
Nominal motor power	0.35 – 0.50 kW
Nominal motor speed	2800 rpm
Suction-side connection design	Threaded
Suction-side connection size	G 3/8"
Pressure-side connection design	Threaded
Pressure-side connection size	G 3/8"
Material designs	Stainless steel
Explosion protection	None

## Technical data

International system of units, alternating current 60 Hz

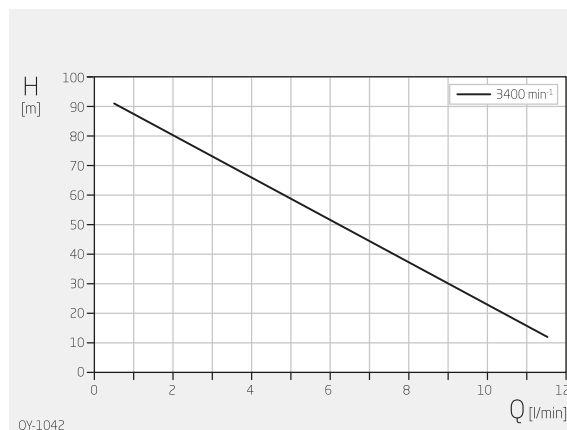


H 140-151 mm

W 120 mm

L 274 mm

Dimensions may vary depending on the design.

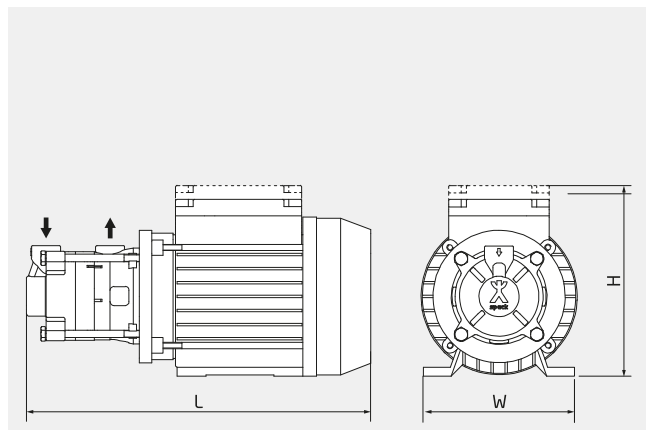


Specifications apply for water at 20°C and nominal speed.

Product type	Regenerative turbine pump
Shaft sealing	Mechanical seal
Pump design	Close-coupled pump
Typical media	Water max. +140 °C Oil max. +160 °C
Self-priming	No
Variable speed	Frequency-converter-compatible motor on request
Total head	12-90 m
Flow rate	1-12 l/min
Nominal pressure	PN 10
Motor current type	1~ 3~
Type of motor	Asynchronous motor
Nominal motor power	0.35 – 0.50 kW
Nominal motor speed	3400 rpm
Suction-side connection design	Threaded
Suction-side connection size	G 3/8"
Pressure-side connection design	Threaded
Pressure-side connection size	G 3/8"
Material designs	Stainless steel
Explosion protection	None

## Technical data

Anglo-American system of measurement, alternating current 60 Hz

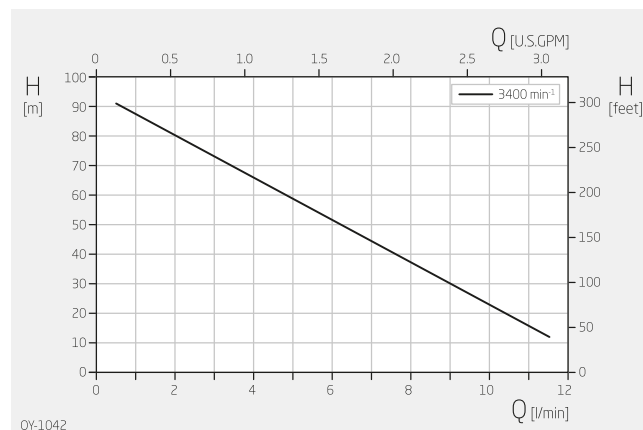


H 5,51-5,94 inch

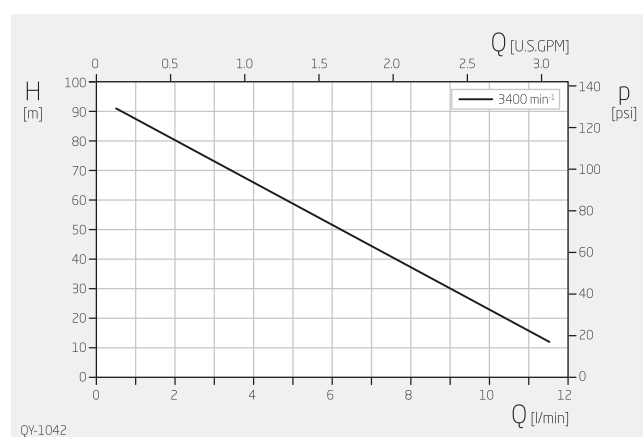
W 4,72 inch

L 10,79 inch

Dimensions may vary depending on the design.



Specifications apply for water at 68°F and nominal speed.



Specifications apply for water at 68°F and nominal speed.

Product type	Regenerative turbine pump
Shaft sealing	Mechanical seal
Pump design	Close-coupled pump
Typical media	Water max. +284 °F Oil max. +320 °F
Self-priming	No
Variable speed	Frequency-converter-compatible motor on request
Total head	39-295 ft
Flow rate	0.1-3.0 USGPM
Nominal pressure	PN 10
Motor current type	1~ 3~
Type of motor	Asynchronous motor
Nominal motor power	0.47 - 0.67 HP
Nominal motor speed	3400 rpm
Suction-side connection design	Threaded
Suction-side connection size	G 3/8"
Pressure-side connection design	Threaded
Pressure-side connection size	G 3/8"
Material designs	Stainless steel
Explosion protection	None