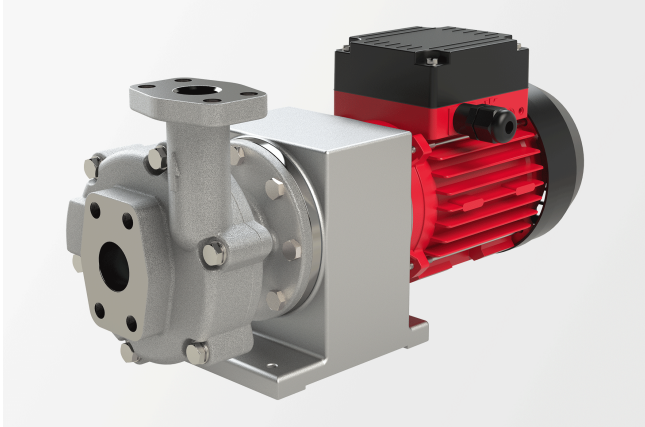


Product data sheet

Centrifugal pump

Bracket pump with magnetic coupling and speed-controlled synchronous motor



Description

- » Centrifugal pump
- » Bracket pump
- » Magnetic coupling
- » Hermetically sealed
- » Operation with a frequency converter
- » Motor efficiency level better than IE4

Markets and applications

Industrial cooling

- » Chillers/cooling machines
- » Cooling appliances
- » Industrial processes up to -100°C

Temperature control

- » Laboratory tempering devices
- » Hot-water tempering devices
- » Oil tempering devices

Get in touch with us!

Speck Pumpen Systemtechnik GmbH
Regensburger Ring 6-8
91154 Roth
Deutschland

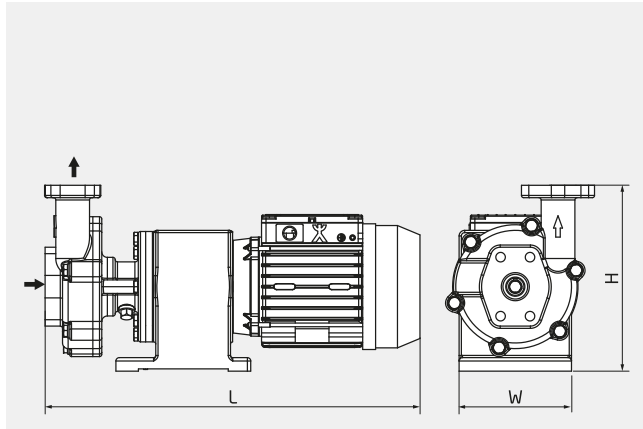
Make a non-binding enquiry

+49 9171 809 0

info@speck.de

Technical data

International system of units, alternating current

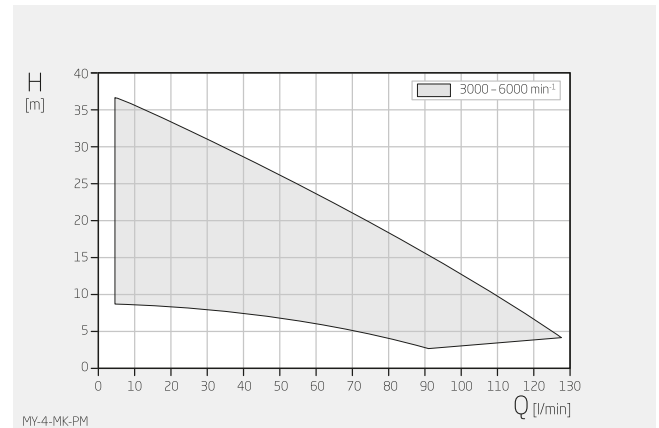


H 165 mm

W 100 mm

L 335 mm

Dimensions may vary depending on the design.



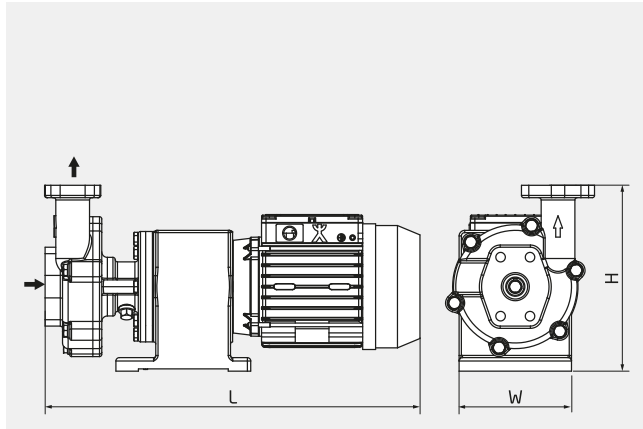
Specifications apply for water at 20°C

Within the characteristic diagrams, each operating point is possible through parametrisation of the drive.

Product type	Centrifugal pump
Shaft sealing/coupling	None/magnetic coupling
Pump design	Bracket pump
Typical media	Water max. +160 °C, on request max. +200 °C Oil max. +350 °C
Self-priming	No
Variable speed	Yes
Total head	3–37 m
Flow rate	5.0–128.0 l/min
Nominal pressure	PN 10
Motor current type	3~
Type of motor	Synchronous motor
Nominal motor power	0.5 kW
Nominal motor speed	3000–6000 rpm
Suction-side connection design	Thread: G, NPT, Rc/PT SAE
Suction-side connection size	G ¾", SAE 1 ¾"
Pressure-side connection design	Thread: G, NPT, Rc/PT SAE
Pressure-side connection size	G ¾", SAE ¾"
Material designs	Stainless steel
Explosion protection	None

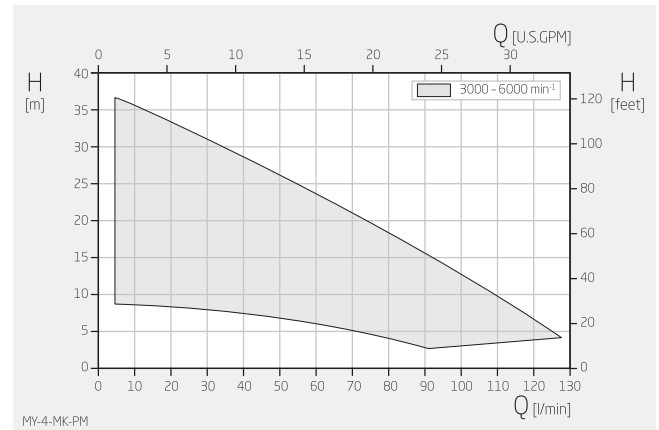
Technical data

Anglo-American system of measurement, alternating current

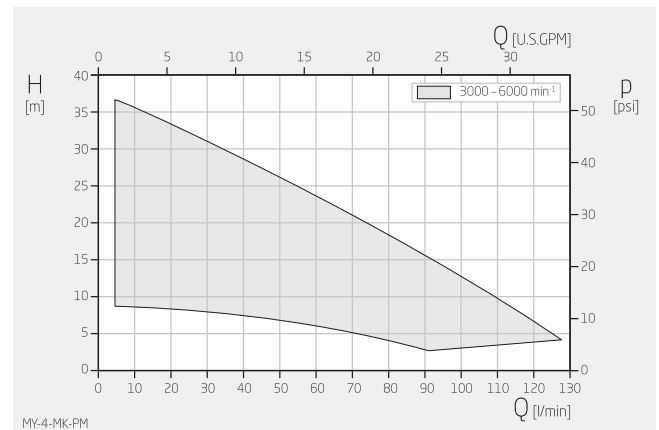


H	6,50 inch
W	3,94 inch
L	13,19 inch

Dimensions may vary depending on the design.



Specifications apply for water at 68°F
Within the characteristic diagrams, each operating point is possible through corresponding parametrisation of the drive.



Specifications apply for water at 68°F
Within the characteristic diagrams, each operating point is possible through corresponding parametrisation of the drive.

Product type	Centrifugal pump
Shaft sealing/coupling	None/magnetic coupling
Pump design	Bracket pump
Typical media	Water max. +320 °F, on request max. +392 °F Oil max. +662 °F
Self-priming	No
Variable speed	Yes
Total head	10-121 ft
Flow rate	22.0-563.6 USGPM
Nominal pressure	PN 10
Motor current type	3~
Type of motor	Synchronous motor
Nominal motor power	0.67 HP
Nominal motor speed	3000-6000 rpm
Suction-side connection design	Thread: G, NPT, Rc/PT SAE
Suction-side connection size	G ¾", SAE 1 ¾"
Pressure-side connection design	Thread: G, NPT, Rc/PT SAE
Pressure-side connection size	G ¾", SAE frac34,"
Material designs	Stainless steel
Explosion protection	None