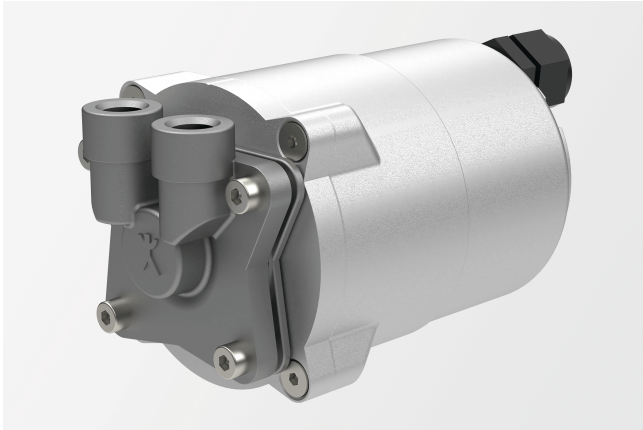


Product data sheet

Regenerative turbine pump

Canned motor pump with speed control



Description

- » Regenerative turbine pump
- » Canned motor pump
- » Adjustable speed
- » Compact
- » Suitable for the delivery of gas shares
- » Steep characteristic curve
- » Long-lasting

Markets and applications

Medical technology

- » Dialysis

Road and rail

- » Air conditioning systems and auxiliary heaters
- » Cooling of electrical and mechanical vehicle components, e.g. traction coolers, gearboxes and batteries

Get in touch with us!

Speck Pumpen Systemtechnik GmbH
Regensburger Ring 6-8
91154 Roth
Deutschland

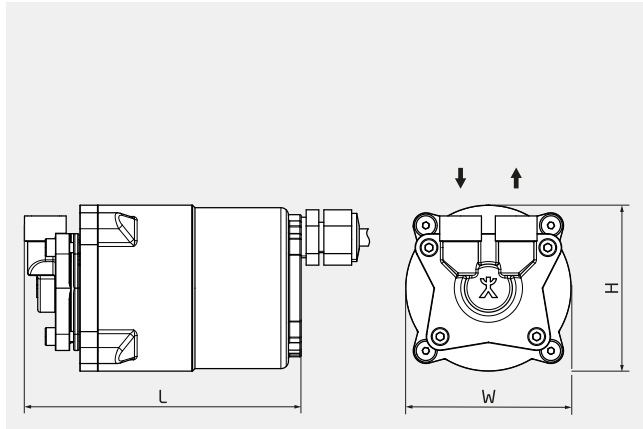
Make a non-binding enquiry

+49 9171 809 0

info@speck.de

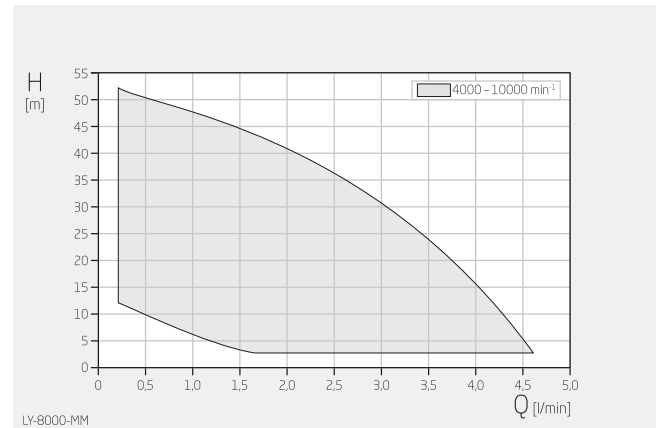
Technical data

International system of units, direct current



H	66 mm
W	66 mm
L	109 mm

Dimensions may vary depending on the design.

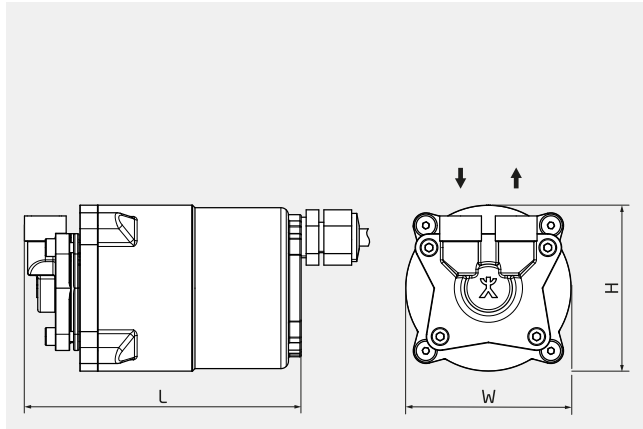


Specifications apply for water at 20°C
Within the characteristic diagrams, each operating point is possible through parametrisation of the drive.

Product type	Regenerative turbine pump
Shaft sealing	None/canned motor
Pump design	Canned motor pump
Typical media	Water max. +80 °C Oil max. +80 °C Water/glycol mixture max. +80 °C
Self-priming	No
Variable speed	Yes
Total head	3-52 m
Flow rate	0.2-4.6 l/min
Nominal pressure	PN 20
Motor current type	Direct current
Type of motor	DC motor BLDC
Nominal motor voltage	24 V
Nominal motor power	80 W
Nominal motor speed	1000 - 10,000 rpm
Suction-side connection design	Thread: G, NPT, Rc/PT
Suction-side connection size	G 1/8"
Pressure-side connection design	Thread: G, NPT, Rc/PT
Pressure-side connection size	G 1/8"
Material designs	Stainless steel Brass
Explosion protection	None

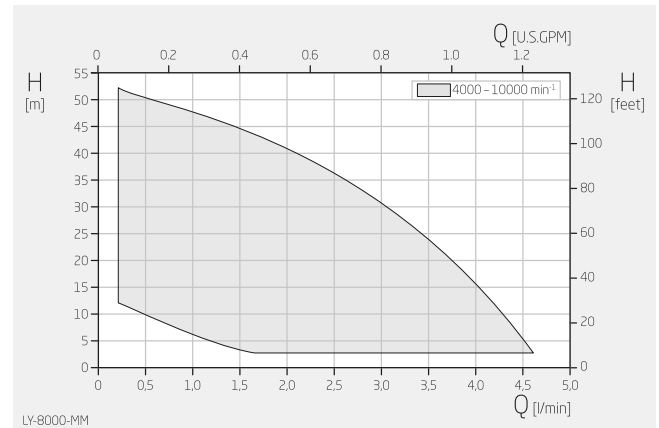
Technical data

Anglo-American system of measurement, direct current



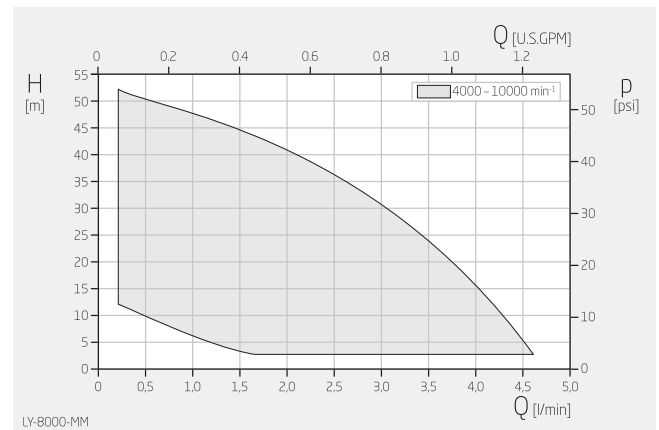
H	2,60 inch
W	2,60 inch
L	4,29 inch

Dimensions may vary depending on the design.



Specifications apply for water at 68°F

Within the characteristic diagrams, each operating point is possible through corresponding parametrisation of the drive.



Specifications apply for water at 68°F

Within the characteristic diagrams, each operating point is possible through corresponding parametrisation of the drive.

Product type	Regenerative turbine pump
Shaft sealing	None/canned motor
Pump design	Canned motor pump
Typical media	Water max. +176 °F Oil max. +176 °F Water/glycol mixture max. +176 °F
Self-priming	No
Variable speed	Yes
Total head	10-171 ft
Flow rate	0.1-1.2 USGPM
Nominal pressure	PN 20
Motor current type	Direct current
Type of motor	DC motor BLDC
Nominal motor voltage	24 V
Nominal motor power	0.11 HP
Nominal motor speed	1000 - 10.000 rpm
Suction-side connection design	Thread: G, NPT, Rc/PT
Suction-side connection size	G 1/8"
Pressure-side connection design	Thread: G, NPT, Rc/PT
Pressure-side connection size	G 1/8"
Material designs	Stainless steel Brass

Explosion protection	None
----------------------	------
