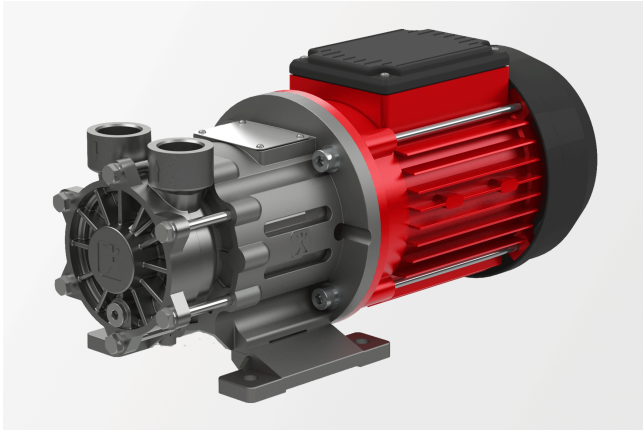


# Product data sheet

**Regenerative turbine pump**

Bracket pump with magnetic coupling



## Description

- » Regenerative turbine pump
- » Bracket pump
- » Magnetic coupling
- » Hermetically sealed
- » Suitable for the delivery of gas shares
- » Steep characteristic curve

## Markets and applications

**Industrial cooling**

- » Chillers/cooling machines
- » Cooling appliances
- » Semiconductor manufacturing
- » Industrial processes up to -100°C

**Plastics processing**

- » Tool tempering for injection moulding

**Road and rail**

- » Cooling of electrical and mechanical vehicle components, e.g. traction coolers, gearboxes and batteries

**Temperature control**

- » Laboratory tempering devices
- » Hot-water tempering devices
- » Oil tempering devices
- » Roller tempering
- » Tool tempering for aluminium injection moulding
- » Tool tempering for plastic injection moulding
- » Semiconductor manufacturing

## Get in touch with us!

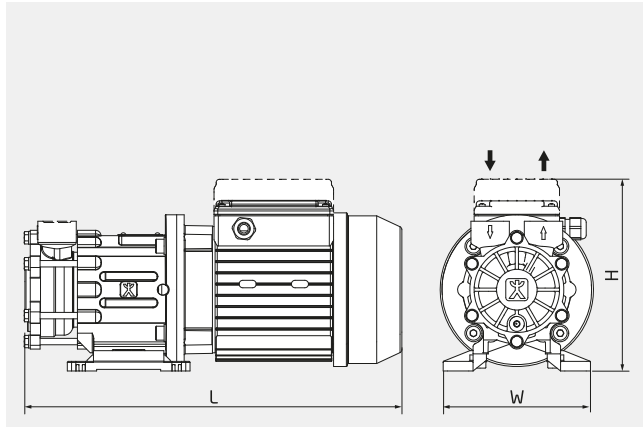
Speck Pumpen Systemtechnik GmbH  
Regensburger Ring 6-8  
91154 Roth  
Deutschland

**Make a non-binding enquiry**

+49 9171 809 0  
info@speck.de

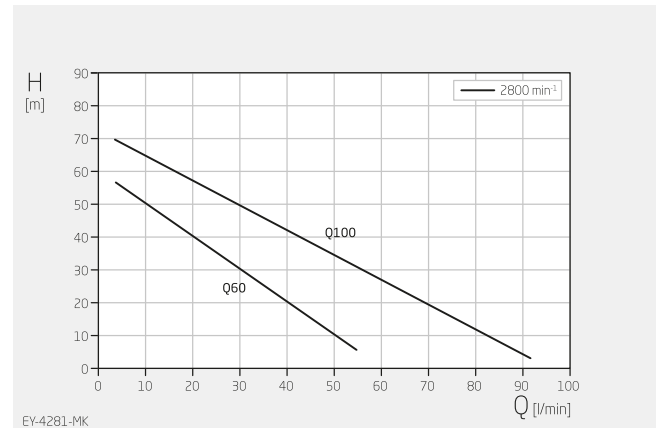
## Technical data

International system of units, alternating current 50 Hz



H	160-177 mm
W	138 mm
L	354 mm

Dimensions may vary depending on the design.

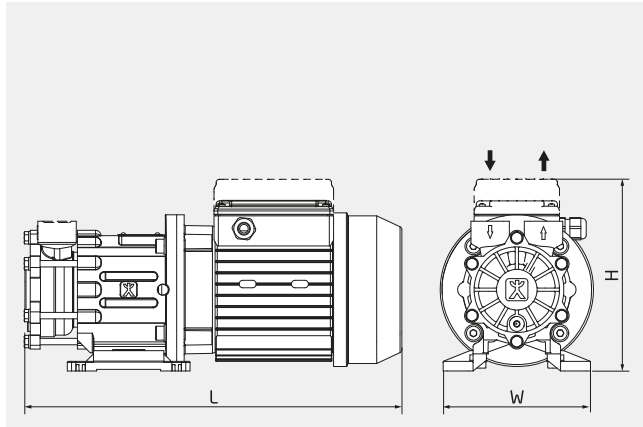


Specifications apply for water at 20°C and nominal speed.

Product type	Regenerative turbine pump
Shaft sealing/coupling	None/magnetic coupling
Pump design	Bracket pump
Typical media	Water max. +140 °C Oil max. +140 °C
Self-priming	No
Variable speed	Frequency-converter-compatible motor on request
Total head	5-70 m
Flow rate	5-92 l/min
Nominal pressure	PN 10 - PN16
Motor current type	3~
Type of motor	Asynchronous motor
Nominal motor power	1.0 - 1.1 kW
Nominal motor speed	2800 rpm
Suction-side connection design	Thread: G, NPT, Rc/PT
Suction-side connection size	G 3/4"
Pressure-side connection design	Thread: G, NPT, Rc/PT
Pressure-side connection size	G 3/4"
Material designs	Stainless steel
Explosion protection	None

## Technical data

International system of units, alternating current 60 Hz

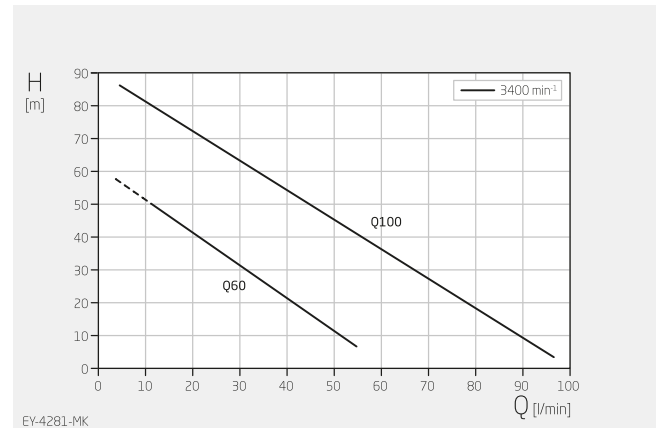


H 160-177 mm

W 138 mm

L 354 mm

Dimensions may vary depending on the design.

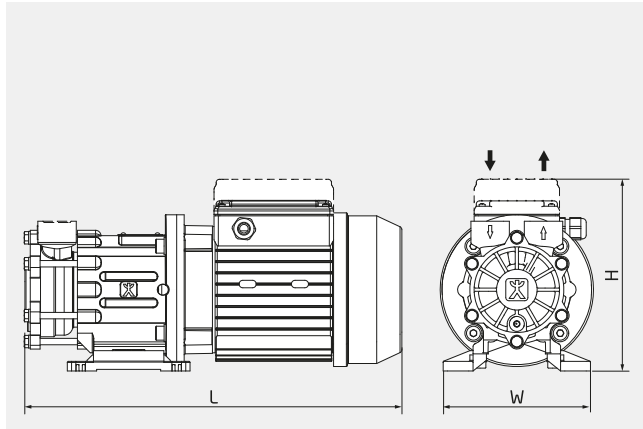


Specifications apply for water at 20°C and nominal speed.

Product type	Regenerative turbine pump
Shaft sealing/coupling	None/magnetic coupling
Pump design	Bracket pump
Typical media	Water max. +140 °C Oil max. +140 °C
Self-priming	No
Variable speed	Frequency-converter-compatible motor on request
Total head	5-87 m
Flow rate	5-97 l/min
Nominal pressure	PN 10 - PN16
Motor current type	3~
Type of motor	Asynchronous motor
Nominal motor power	1.0 - 1.1 kW
Nominal motor speed	3400 rpm
Suction-side connection design	Thread: G, NPT, Rc/PT
Suction-side connection size	G 3/4"
Pressure-side connection design	Thread: G, NPT, Rc/PT
Pressure-side connection size	G 3/4"
Material designs	Stainless steel
Explosion protection	None

## Technical data

Anglo-American system of measurement, alternating current 60 Hz

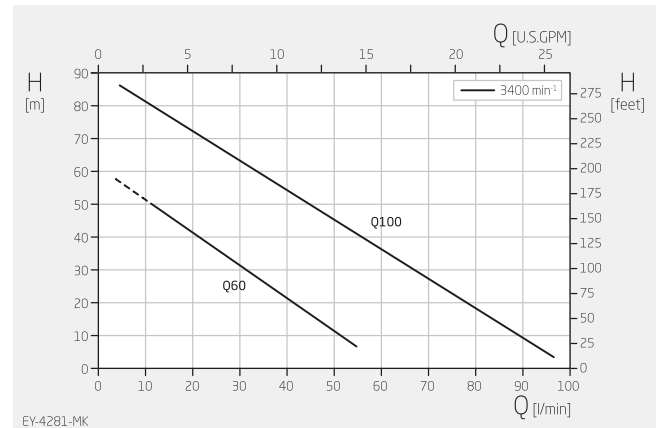


H 6,30-6,97 inch

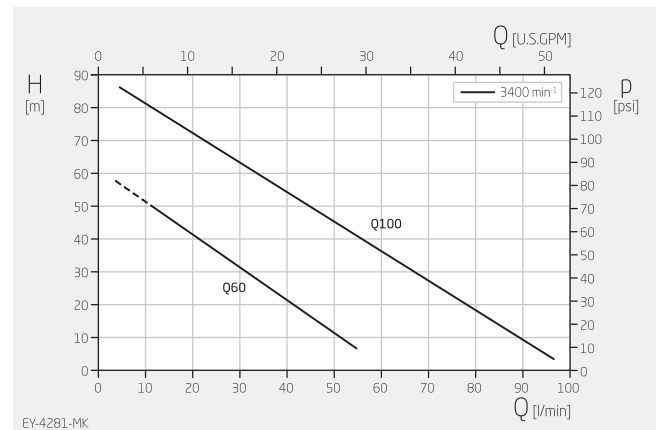
W 5,43 inch

L 13,94 inch

Dimensions may vary depending on the design.



Specifications apply for water at 68°F and nominal speed.



Specifications apply for water at 68°F and nominal speed.

Product type	Regenerative turbine pump
Shaft sealing/coupling	None/magnetic coupling
Pump design	Bracket pump
Typical media	Water max. +284 °F Oil max. +284 °F
Self-priming	No
Variable speed	Frequency-converter-compatible motor on request
Total head	16-285 ft
Flow rate	1.3-25.6 USGPM
Nominal pressure	PN 10 - PN16
Motor current type	3~
Type of motor	Asynchronous motor
Nominal motor power	1.34 - 1.47 HP
Nominal motor speed	3400 rpm
Suction-side connection design	Thread: G, NPT, Rc/PT
Suction-side connection size	G ¾"
Pressure-side connection design	Thread: G, NPT, Rc/PT
Pressure-side connection size	G ¾"
Material designs	Stainless steel
Explosion protection	None